

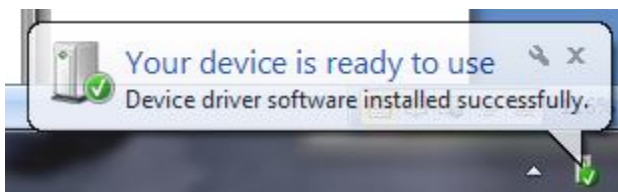
# MATE TECHNOLOGIES – 58MM PRINTER

## WINDOWS DRIVER INSTALLATION

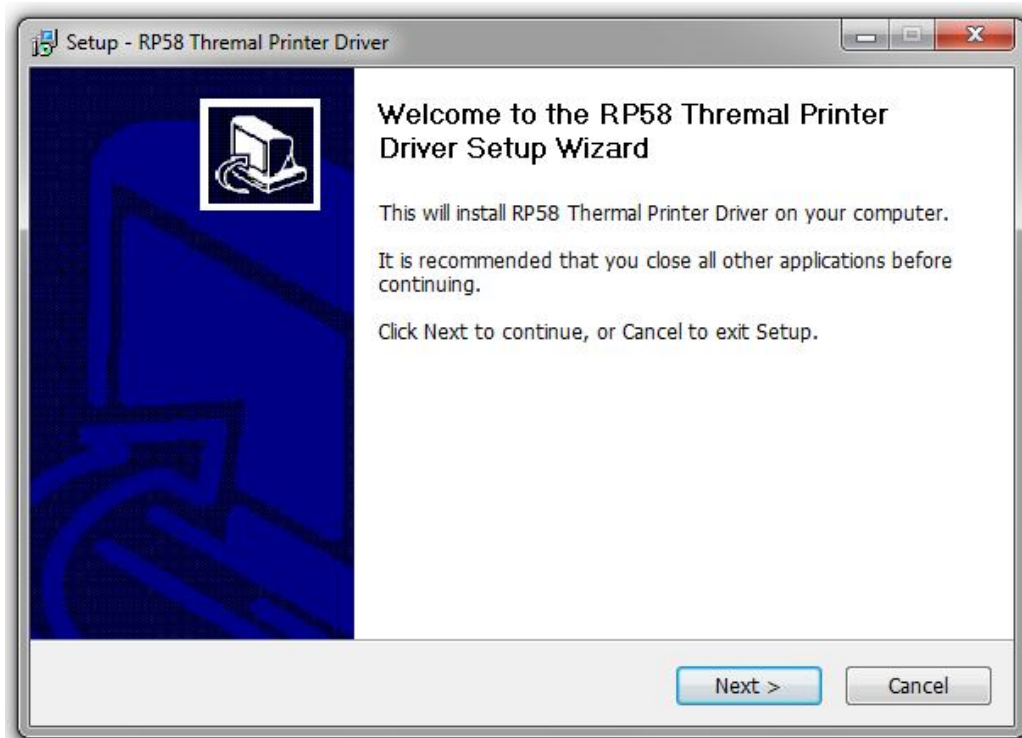
Below is the method to install MTP2 (58mm) printer in Windows operating system

Turn on Printer and insert paper roll into it. Connect it to Windows desktop PC via USB

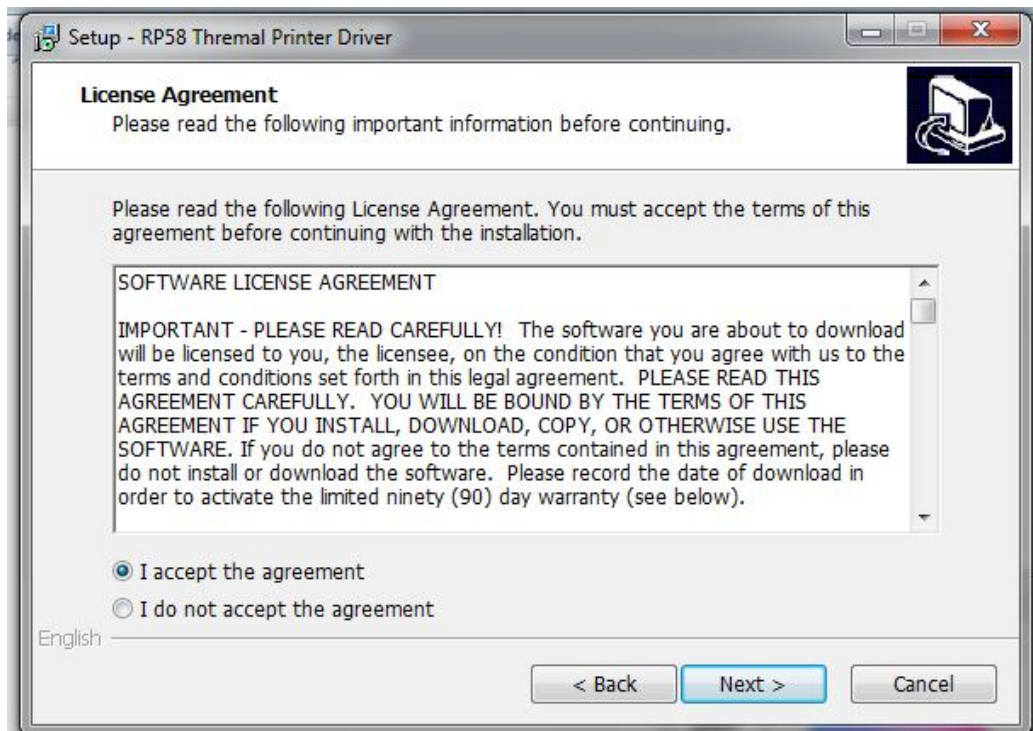
Built in driver will be installed to your OS which will show notification icon like below



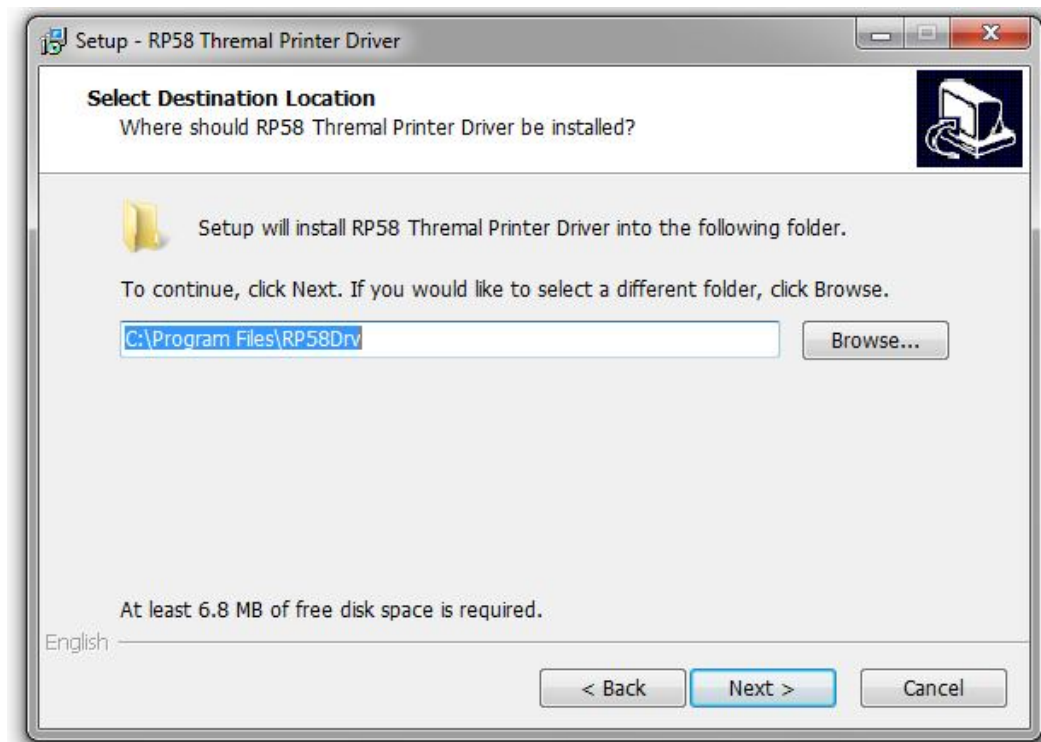
Open folder Windows Driver and run RP58Setup.exe program



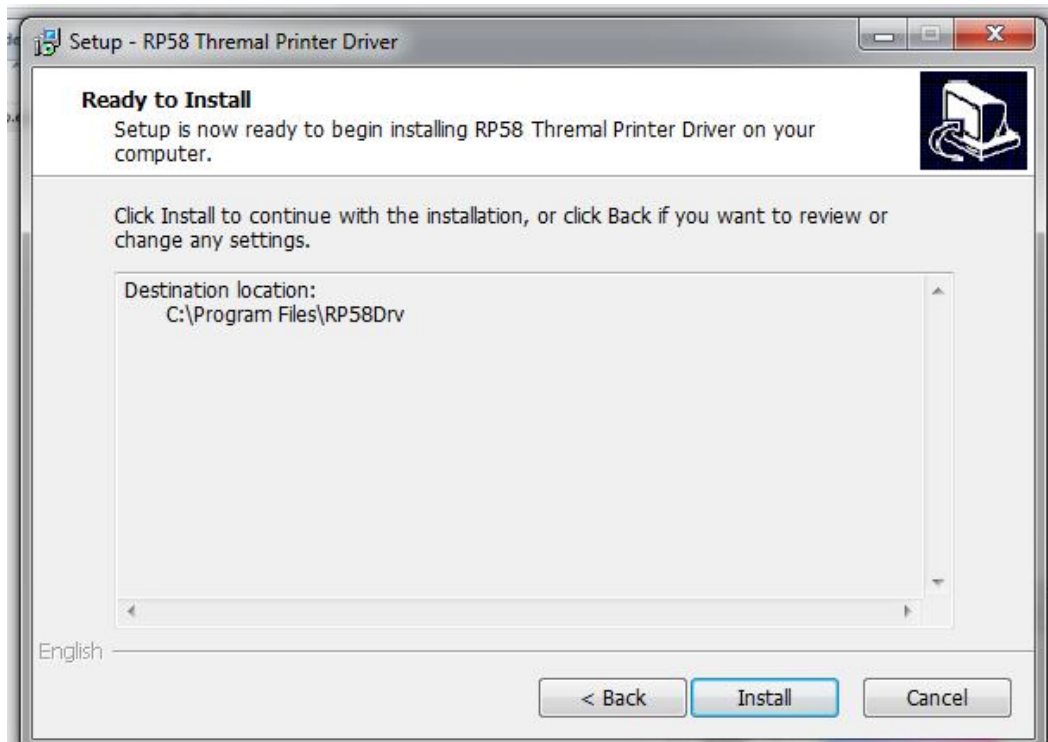
Click Next



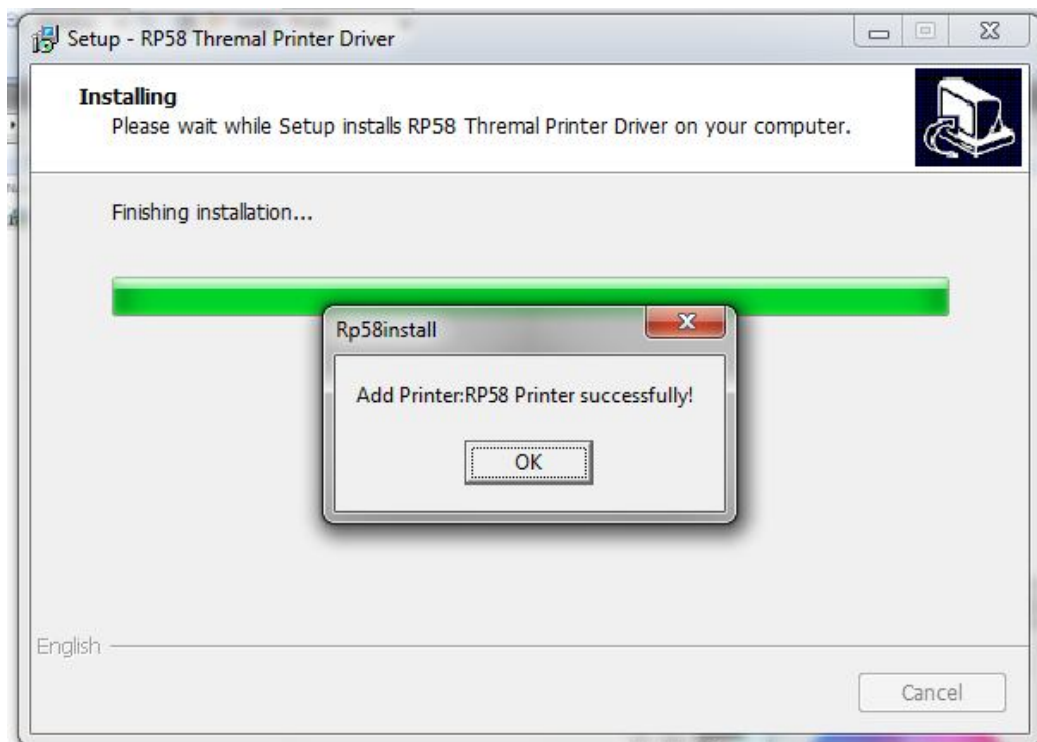
Tick 'I accept the agreement' and Click Next



Click Next

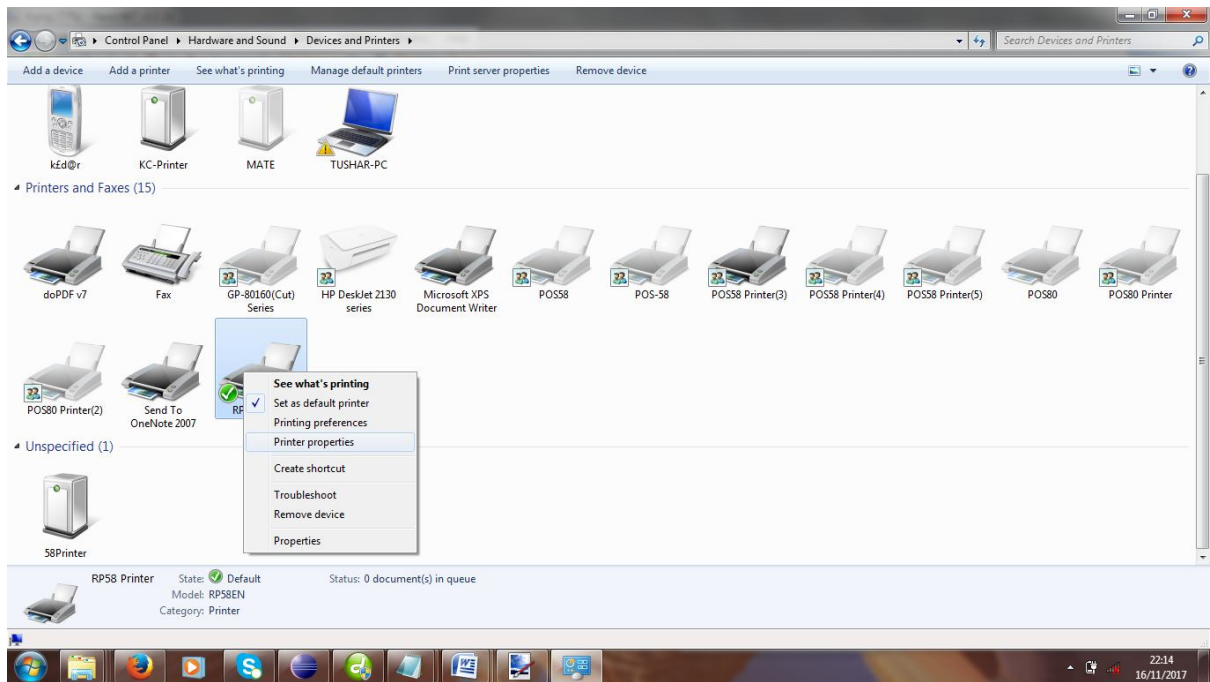


Click Install

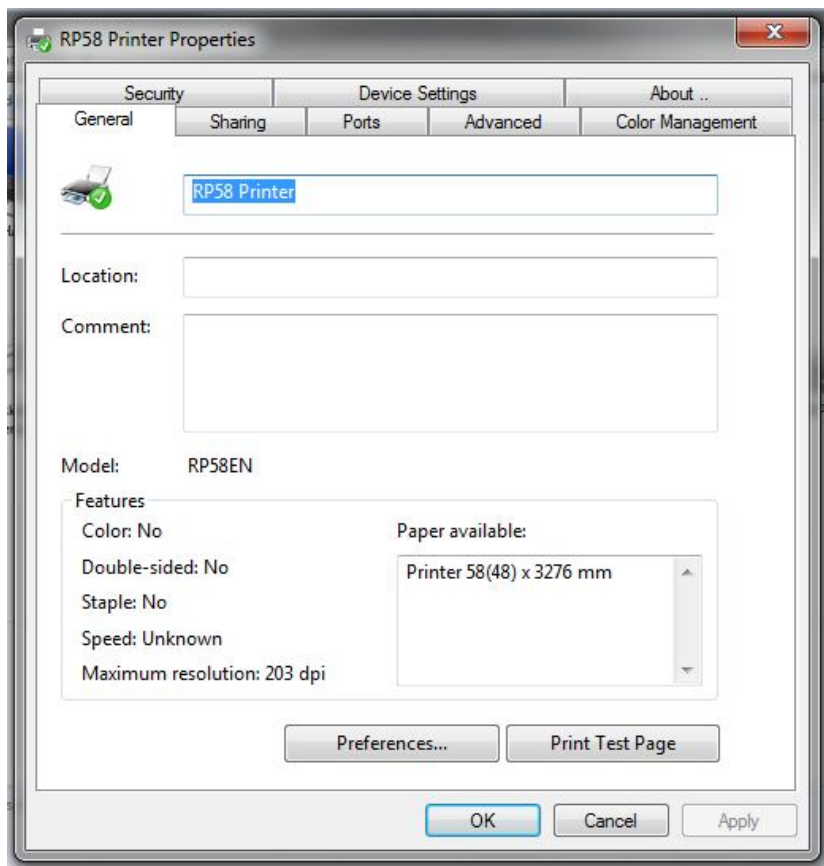


You will see message that printer is successfully installed

Now go to Devices and Printers in Control Panel



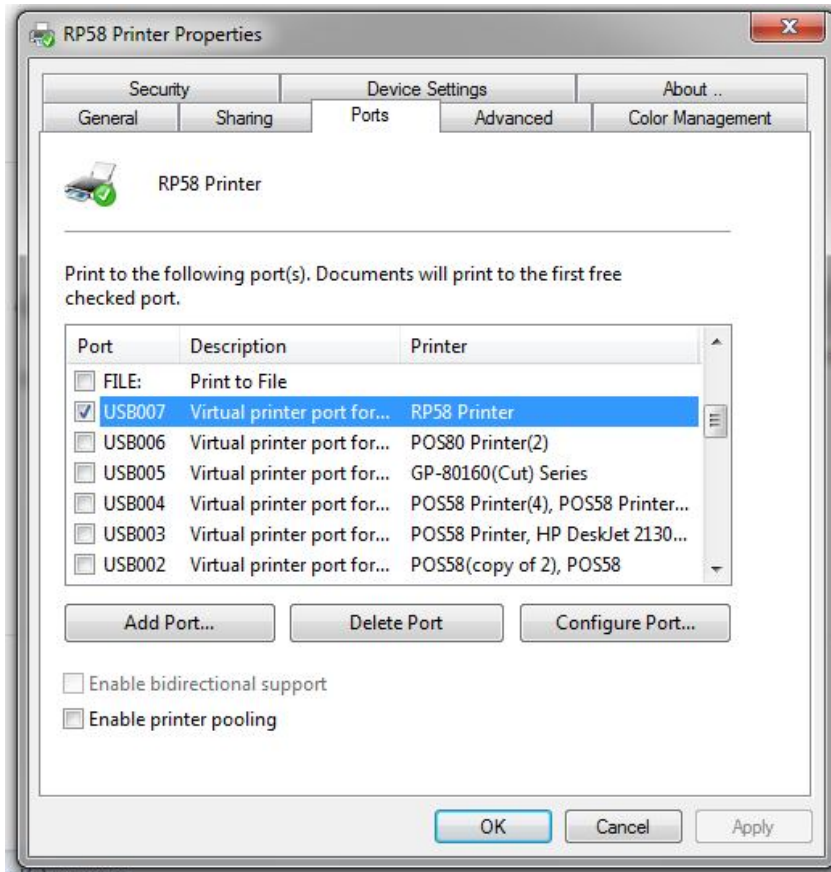
You will see the printer we just installed. Now right click on it and select 'Printer properties'



Click 'Print Test Page'. This will print test page on your printer.

If it throws error instead of printing, it is possible that wrong USB port is set in printer properties

In this case, follow the steps below



Select Ports tab. You will see many USB ports like shown in above image i.e. USB002, USB003, USB004, USB005. It is important to set the correct USB port here. Just select any one port and click 'Apply'. Disconnect your printer and connect again. Go to General tab and click 'Print Test Page'. If it prints some data, your printer is installed on correct port. If it fails to print, just repeat the above step by changing different USB port