

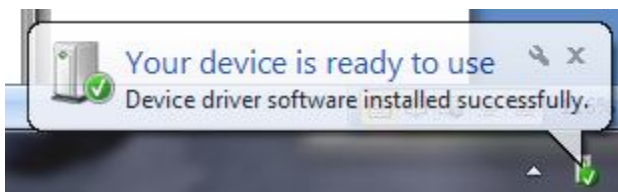
MATE TECHNOLOGIES – 80MM PRINTER

WINDOWS DRIVER INSTALLATION

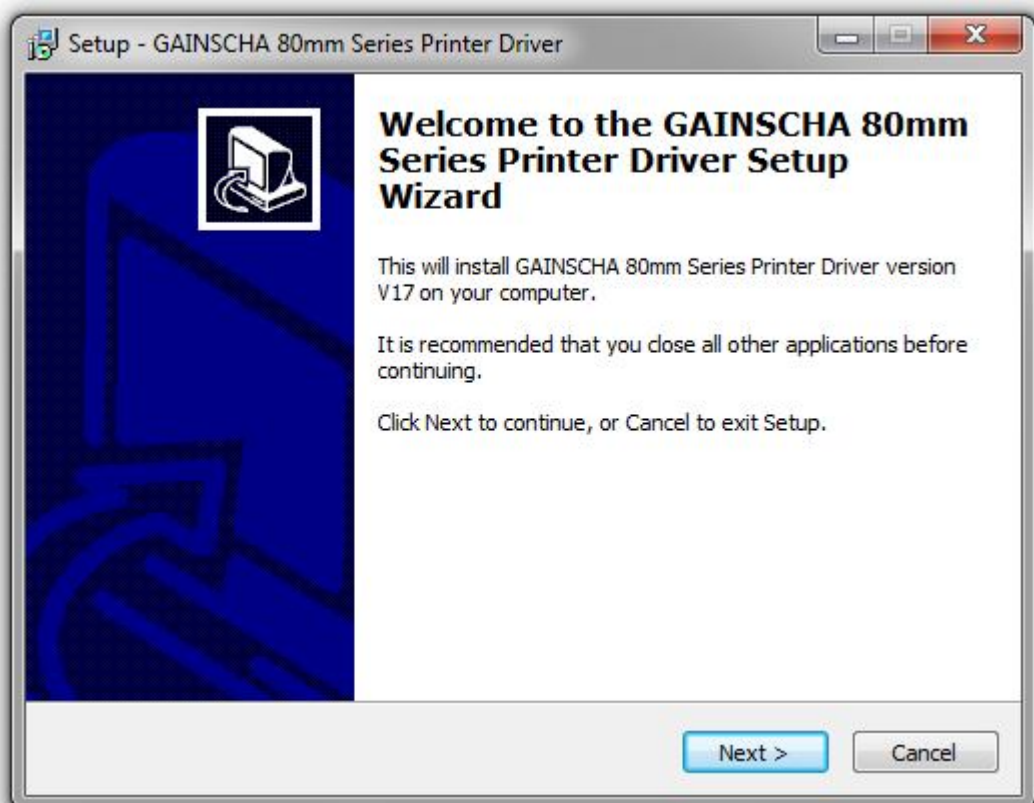
Below is the method to install 80mm thermal printer in Windows operating system

Turn on Printer and insert paper roll into it. Connect it to Windows desktop PC via USB

Built in driver will be installed to your OS which will show notification icon like below



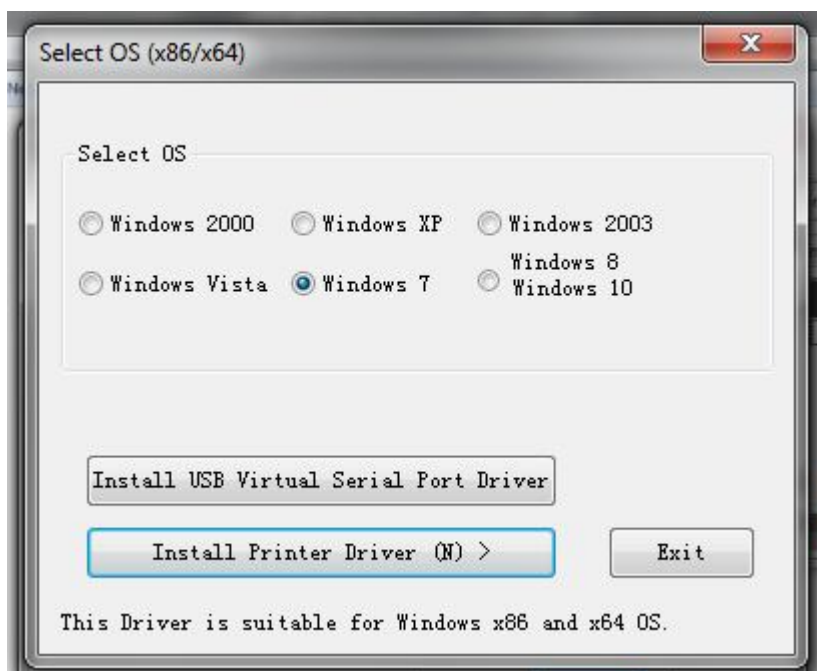
Open folder Windows Driver and run Setup.exe program



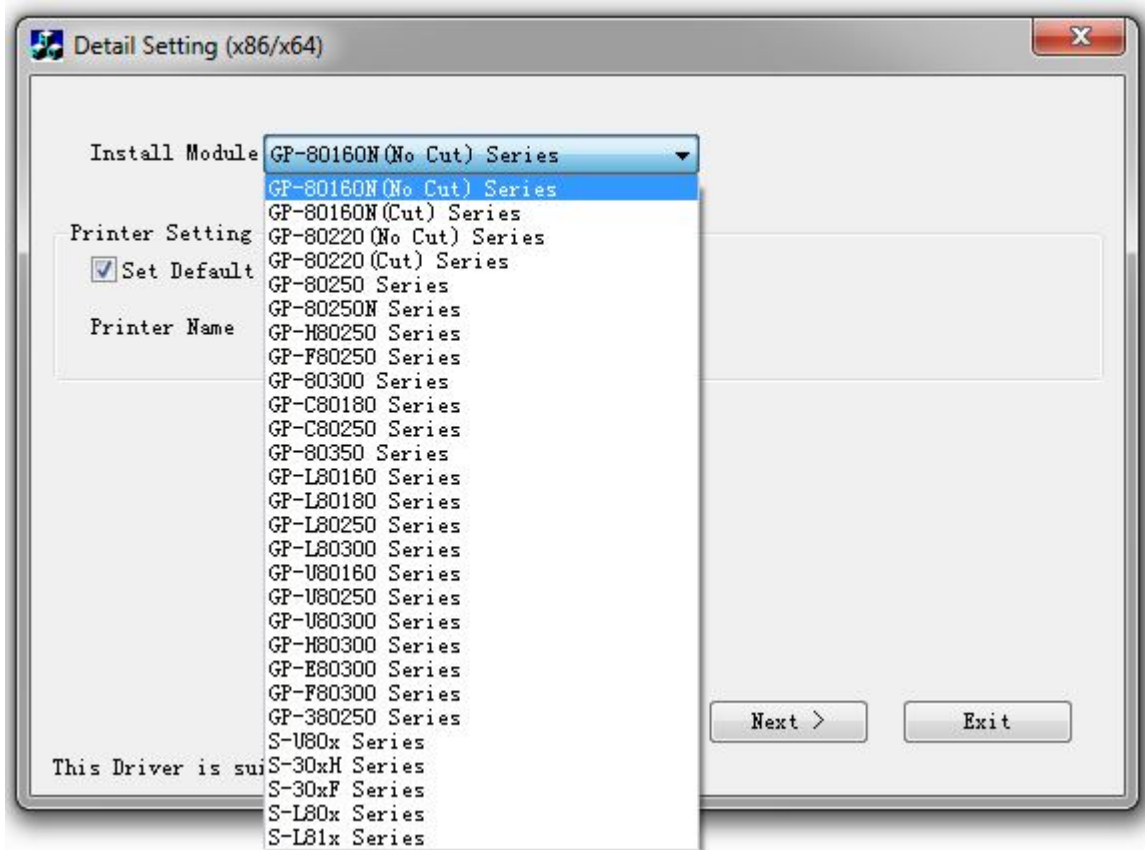
Click Next



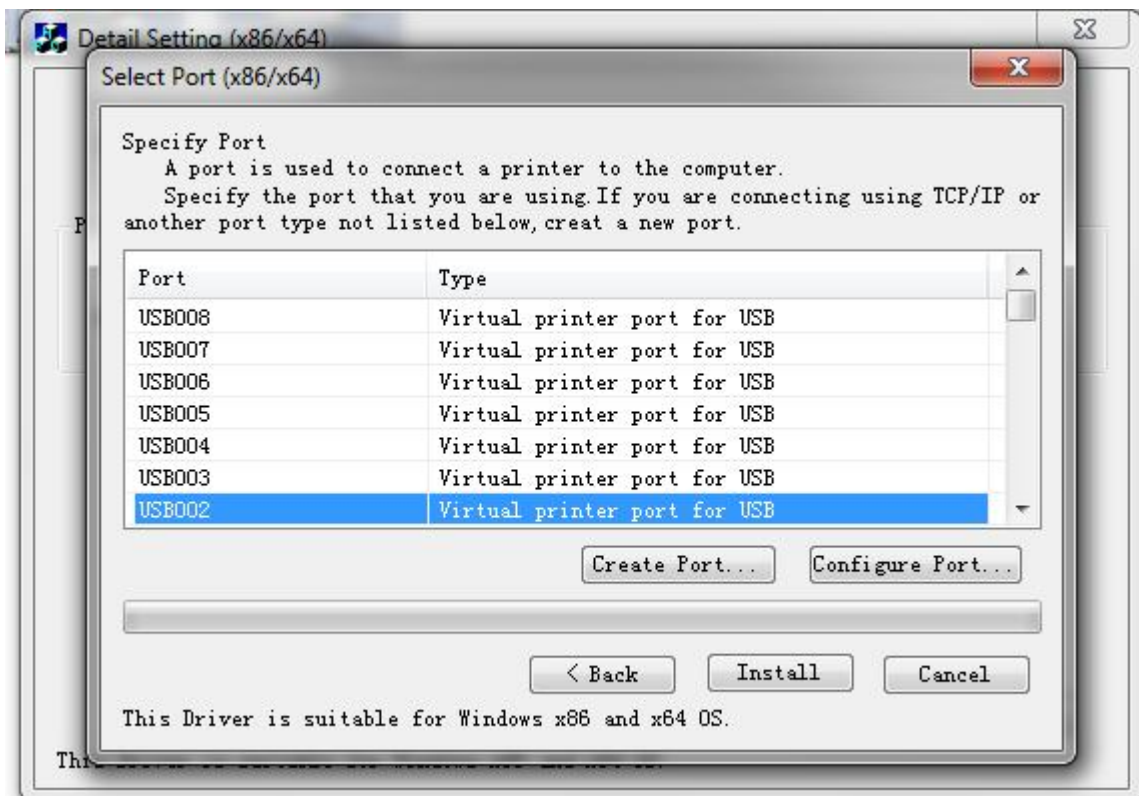
Tick 'I accept the agreement' and Click Next



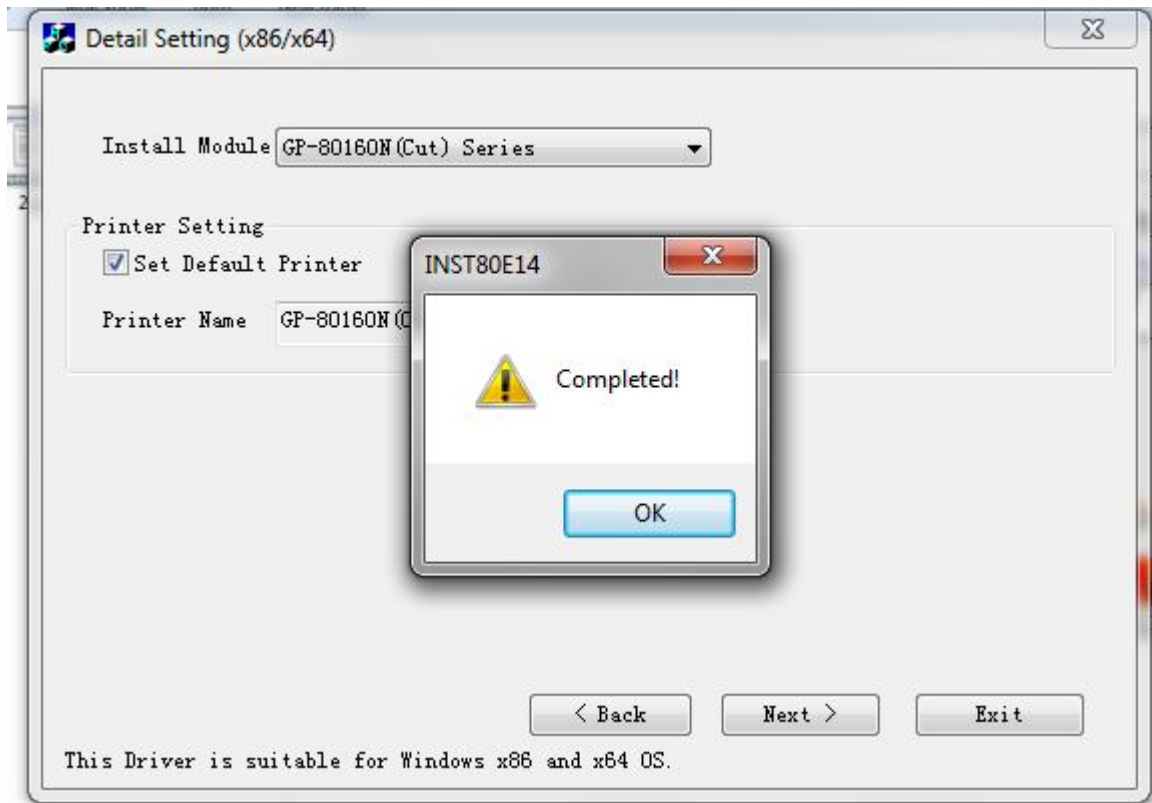
Select your Windows operating system and click 'Install Printer Driver'



Select the option as shown in above image and Click Install

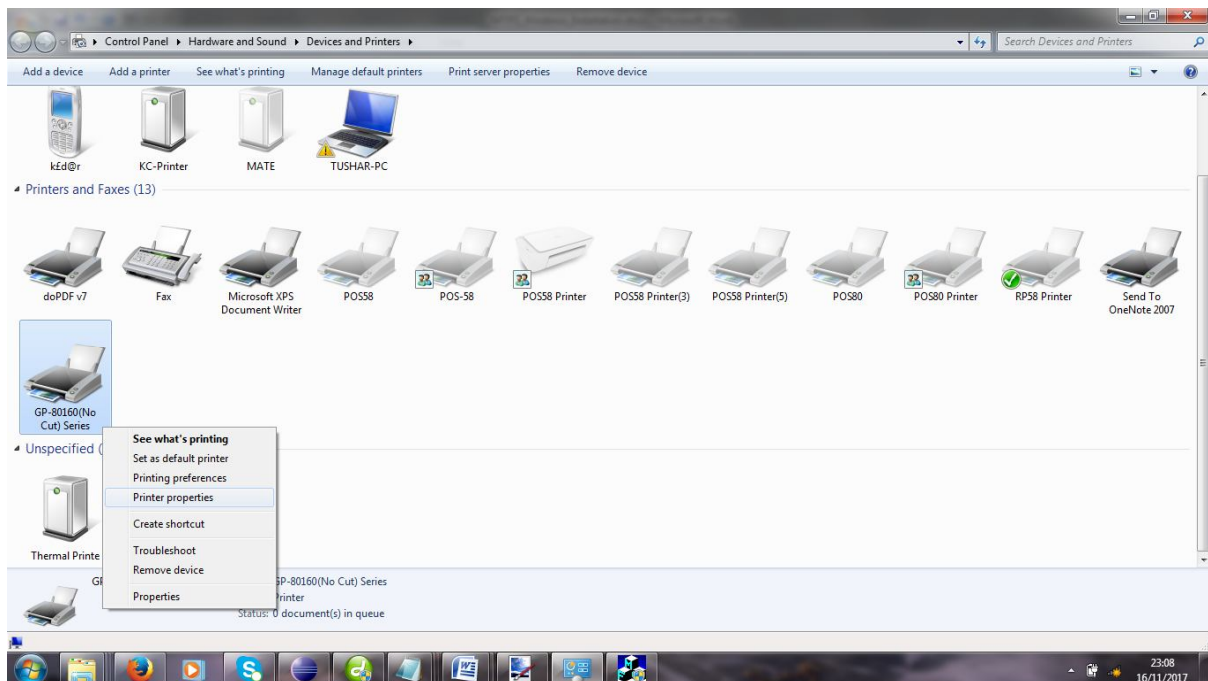


Select USB port and click Install

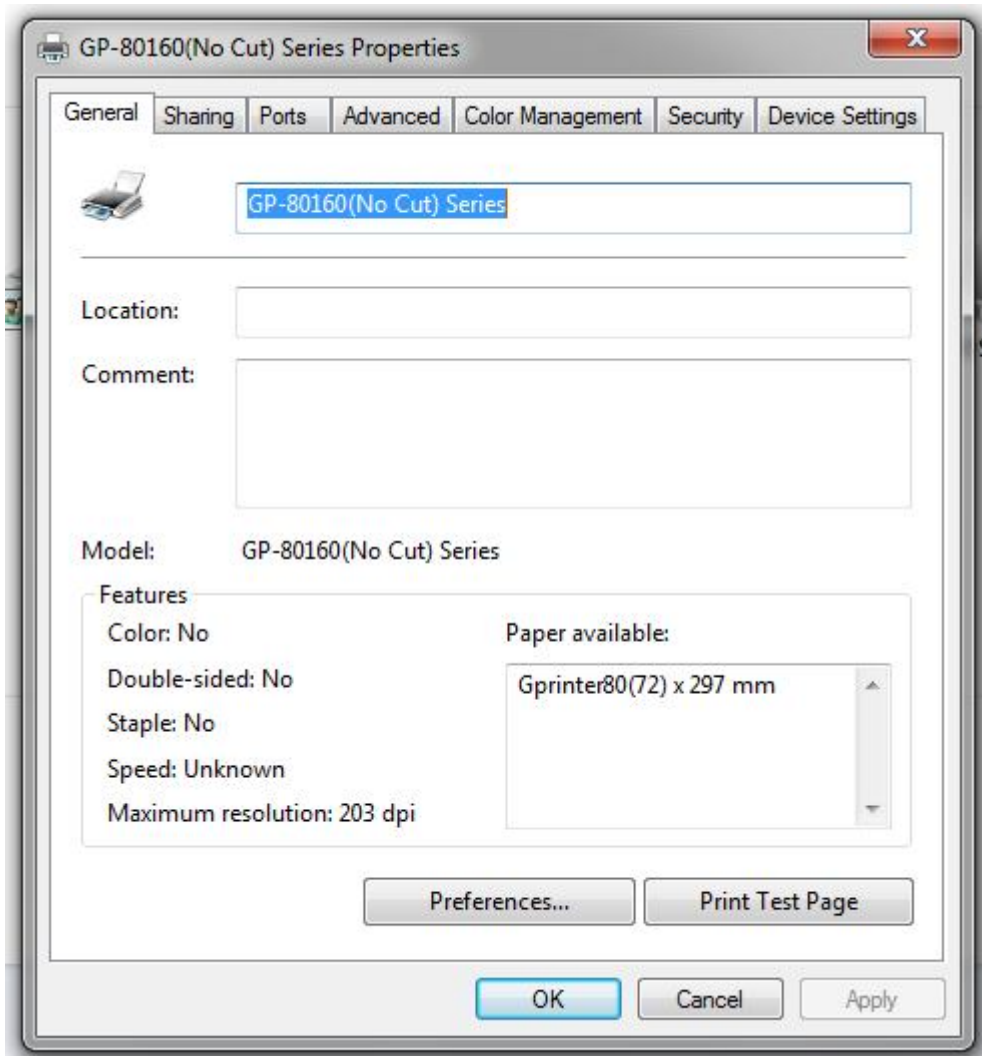


You will see message that installation is completed

Now go to Devices and Printers in Control Panel



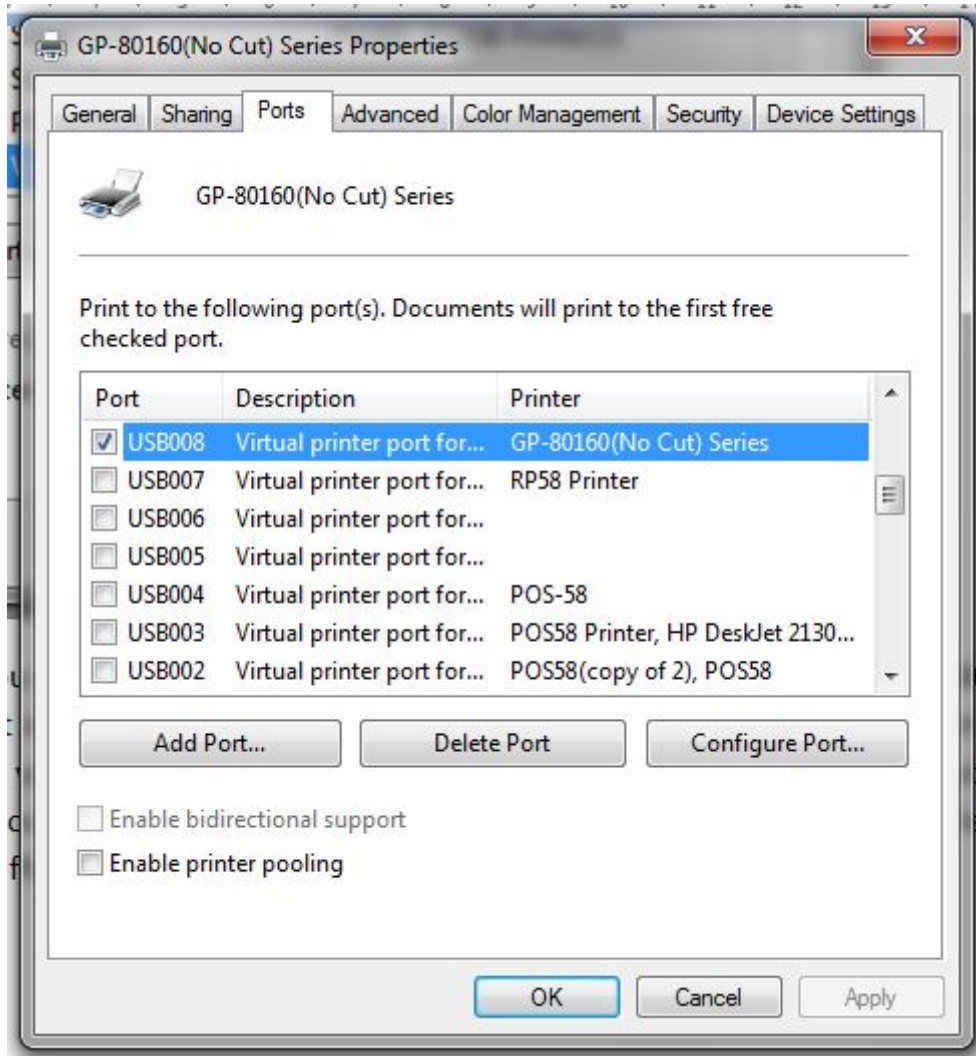
You will see the printer we just installed. Now right click on it and select 'Printer properties'



Click 'Print Test Page'. This will print test page on your printer.

If it throws error instead of printing, it is possible that wrong USB port is set in printer properties

In this case, follow the steps below



Select Ports tab. You will see many USB ports like shown in above image i.e. USB002, USB003, USB004, USB005 and more. It is important to set the correct USB port here. Just select any one port and click 'Apply'. Disconnect your printer and connect again. Go to General tab and click 'Print Test Page'. If it prints some data, your printer is installed on correct port. If it fails to print, just repeat the above step by changing different USB port